

research reports

Speer's Nazi Construction Policies Aped by Rockefeller Supranational Faction

June 29 (IPS) — The Neo-Nazi from Bavaria, Franz-Josef Strauss, recently criticized the construction policy of the Schmidt government. Said Strauss: The SPD government is proceeding correctly in the implementation of fascist economic policies by collapsing credit, thus squeezing out all small companies and causing mass unemployment. However, they are lacking the policy of Speer.

The German working class, whose homes are composed of new construction built directly on remaining heaps of rubble, know exactly what Franz Strauss means. The German worker, whose grafted "cog" identity in the Economic Miracle is disintegrating into the Rockefeller-controlled economic collapse, can now find, beneath the debris with which he has covered his own humanity, the reality of the Speer. In his effort to do so and to warn his international working-class brothers of the impending human disaster, the German worker can prove that only bourgeois, not human, history repeats itself.

The older German worker can remember that the Schachtian policy of credit squeeze resulting in the fascist cartelization of the construction industry and mass unemployment was merely the necessary prelude to the labor-intensive construction methods of Albert Speer, Hitler's foremost architect and later Minister of Armaments and War Production for the Third Reich. Speer called it "primitive *bauweise*." The German worker remembers it as killing slave labor.

Sweat Equity — 1933

As early as 1932, Schacht had paved the way with the Program of Subsidies for the Reconstruction and Repair of Dwellings (an "urban homesteading" program). With Hitler's rise to power this process was accelerated with the institution of compulsory labor where workers lived in barracks next to the sites. In the construction of the *autobahns* (the world's first superhighways), the monstrous public buildings of the Nazi regimes, and the huge defense installations, only machinery that was absolutely technically necessary was used. The millions of desperate German unemployed were soaked up by the Todt Organization and the Forced Labor Service to construct, by their bare hands, an empire whose continued existence was predicated upon an ever-increasing rate of primitive accumulation against the European working class. No new housing was built. Under the Speer policy of primitive *bauweise*, the

German working class could only build Third Reich monuments to genocide.

Ruin Value

Speer himself states: "Hitler liked to say that the purpose of his building was to transmit his time and its spirit to posterity. Ultimately all that remained to remind men of the great epochs of history was their monumental architecture. Today Mussolini could point to the buildings of the Roman Empire as symbolizing the heroic spirit of Rome and fire his nation with the idea of a modern empire. Our architectural works should also speak to the conscience of a future Germany. Hitler stressed the value of a permanent type of construction.

"Later, in clearing ground for the building on the Zeppelin Field, the Nuremberg streetcar depot had to be removed. After it was blown up, its iron reinforcements protruded from concrete debris and had already begun to rust. One could easily imagine their further decay.

"This dreary sight led me to some thought which I later propounded to Hitler as the 'Theory of Ruin Value.' The idea was that buildings of modern construction were poorly suited to form that 'bridge of tradition' to future generations. How could these rusting heaps of rubble communicate heroic inspirations? My theory was that by using special materials and by applying certain principles of statics, we should be able to build structures which even in a state of decay, after hundreds and thousands of years, would resemble Roman models. To this end we avoided all elements of modern construction such as steel girders and reinforced concrete."

The Aftermath of the War

Within the next five years, the Strategic Bombing policy of the Anglo-American SS had reduced the Third Reich to ruin. A U.S. Survey reports: "The psychological effects of bombing are not limited to the ordeal of the air raid, but extend to the total dislocation of civilian life. The level of morale under bombing is determined by the terror of the attack and its immediate objective consequences in terms of civilians killed and maimed, homes destroyed, families broken up by evacuation, and utility services destroyed or disrupted."

Then the Speer policy of primitive *bauweise* was forced upon the German working-class with a vengeance. The German worker knows that the end result of the Speer revival today can only be the final destruction of all human life. Amidst mass starvation and acute fuel

shortages from 1945 to 1948, the German worker, organized in local clearing teams, pulled together out of the rubble the remains of his existence. Minimal housing re-construction did not begin until the late 1950's.

The German worker already knows that the massive but totally useless energy re-development projects now initiated by the Rockefeller cabal, the International Labor Organization (ILO) call for "modern labor intensive technology," the commensurate destruction of small construction firms and the complete annihilation of construction trade unions, all signal the revival of Speer's policy of pyramid-building using the primitive *bauweise* methods.

The first step in this process of human disintegration is the transition from construction for useful purposes (such as housing) to the building of monuments to the insanity of capitalist Zero Growth depression policy.

A War Economy

In a recent speech before the Banca Commerciale in Milan Rockefeller prime agent Ugo La Malfa, after launching a scorching attack on the trade unions, stated that the bankrupt Italian economy is a "war economy." The reorganization of the economy cannot be based on current foreign models (e.g., Brazil). It is now too late for such experiments in recycled production. Instead, La Malfa suggests, the present Italian situation is more like that of Germany after World War II where the present construction industry must be sacrificed to save agriculture and industry.

Indeed, in the past year, the worldwide construction industry has virtually ground to a halt, with the combination of rising rents and the decrease in living standards causing acute housing shortages especially in Italy. In France private construction firms are bitterly complaining of a credit crunch, predicting the collapse of the industry and an ensuing housing crisis. In Germany, housing construction has declined by 40 per cent. Britain's long-standing housing crisis has broken up hundreds of families who have been unable to find a place to live — anywhere.

In Italy, where rents take up 40-50 per cent of a working wage, 60,000 rooms in Rome alone are vacant because workers cannot pay the rent on existent dwellings. Now a squatting movement, organized by the "leftist" group Lotta Continua, of *Barraccati* (shanty dwellers), have moved into 300,000 new and unfinished housing units — causing the mobilization of proto-fascist vigilantes to oust them. Like the wretched millions of the Third World, the average Italian working family cannot afford a place to live.

No More Housing

June 27 the United States Department of Housing and Urban Development announced that it will "cease to build public housing and will instead pay the rents for poor families to lease dwellings from private landlords. a

departure from 40 years of national public housing policies. Approximately \$1,123 billion a year would be allocated to pay the rents to make 416,000 privately owned units available." This new policy is the Schacht policy of massive accumulation from the working class to maintain the fictitious value of real estate. Directly behind the landlords stand the Rockefeller-controlled banks, who will reap their wealth from the miserable living conditions of the working class. The Urban Homesteading Projects in cities like Philadelphia and Sweat Equity in New York City guarantee that individual families will renovate gutted slum dwellings for minimal habitation standards using labor-intensive (primitive *bauweise*) methods. Under the guise of pride in building your own home, the working class is already taking part in the Speer Revival.

HUD will also allocate \$100 million to public housing authorities in 32 cities for "physical improvements and better security and services for residents for housing projects.... Residents would be asked to help make repairs, paint apartments and corridors and repair damage inflicted by otherwise blighted conditions." Judenrat head Anthony Henry of the National Tenants Organization demands that "tenants should have the final word on improvement plans."

This HUD policy of using such unskilled improvement teams organized on the basis of Reesian local control is fascism. The HUD announcement coupled with the Mondale resettlement bill demonstrates that Rockefeller has moved from the mere preparation for fascism into the overt implementation of fascist economic and social policies proper. The spectre of Albert Speer now walks U.S. cities.

In direct opposition to this capitalist policy of criminal insanity, the economic program based on the self-organization of the worldwide working class would call for the immediate **technology-intensive** construction of 10 million housing units in the U.S. alone, putting millions of underemployed to work at a living wage. The swiftness with which a socialist government could provide the emergency housing so desperately needed by the European and Third World population is directly dependent upon the reconstruction of the machine tool industry which the Rockefeller faction is gutting at an increasingly rapid rate.

Fascist Accumulation

The transformation from a stabilized statist war economy to a fascist Zero Growth economy involves not only the primitive accumulation of the working-class population but a continual process of cartelization of surviving industries: There is simply not enough profit for all capitalists to survive. By means of the Rockefeller-controlled credit squeeze, the largest worldwide construction industries like the CIA-linked Bechtel Company, the Parsons Co., and Daniel Bell Corp. are

rapidly cannibalizing the remains of small-time firms caught in the credit bind.

Secondly, the nature of present capitalist Zero Growth investment policies (controlled by Rockefeller banking interests) into huge "energy development" projects puts requirements on the ability of smaller firms to handle projects of such magnitude. George Christie, a former Prudential economist, told a symposium of the New Jersey Subcontractors: "Energy production and conservation will be the determining factor in the direction that the construction industry goes. If you want to latch onto the next major boom, get into the energy construction business."

In the United States, the construction industry is under the virtual control of the Bechtel Company.

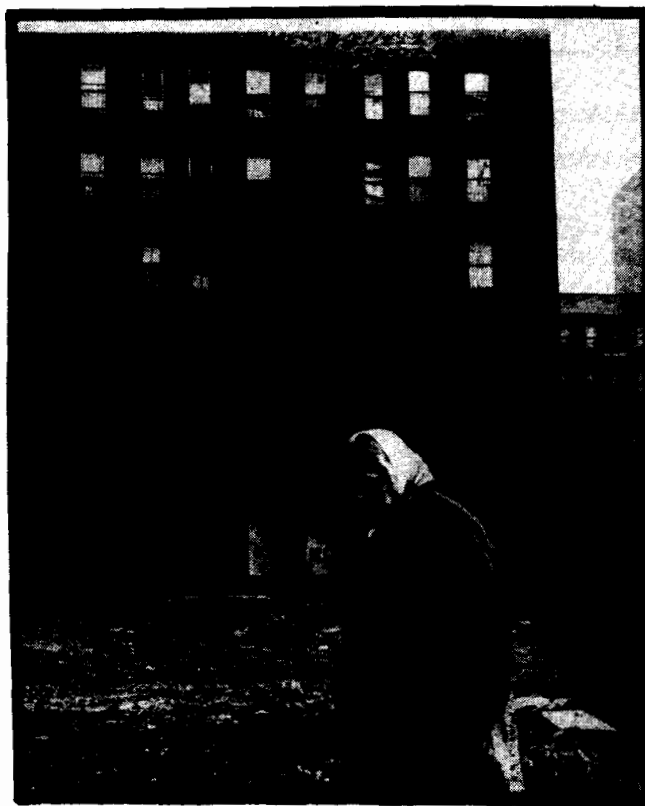
Stephen Bechtel is a leading member of the Construction Roundtable, which regulates the wages for the construction industry. Bechtel also has control over the Association of Building Contractors (ABC), a vehemently anti-union association, and the National Contractors Association of union contractors. The Business Roundtable successfully plays off union and non-union contract associations to lower the wages of all construction workers. Thirdly, Bechtel owns the lion's share of large energy redevelopment projects in the U.S. and Canada, including eight such projects in Michigan alone. Stephen Bechtel, along with his longstanding business partner, former CIA head John McCone, sits on the Board of Directors of the Stanford Research Institute, the think tank which is currently planning the de-industrialization of the Third World and Europe and preparing the initiating capitalist thrust into the Soviet Union.

This brief sketch of the panorama of interests and the extent of power of the Bechtel Company, demonstrates that the ruling Rockefeller capitalist faction is fully prepared to advance total war upon the worldwide working class and implement a Zero Growth economy.

Wipe-Out in Italy

In Italy the Rumor government in direct collusion with the Carli policy of tight credit has declared open war on all small and medium-sized firms which have previously maintained a stranglehold on Italian construction. At present Carli's credit crunch threatens to close down the entire industry, throwing two million out of work. Already public works projects funded by municipalities, like the construction of the Padua Canal and similar projects in Turin, are being halted.

However, the Rockefeller-controlled government is ready to employ these desperate unemployed in the vast recycling projects in the Mezzogiorno. These development projects outlined in 1973 by the Programmazione, a planning agency, will be implemented by three public government participation agencies: Montedison, a semi-public company and Fiat, bypassing all regions and municipalities and small and medium-sized firms. The hysterical Italian Communist Party (PCI) can only protest that the projects represent "a useless mortification of private initiative, in



particular small and medium-sized companies." The Italian Socialist Party (PSI) protests (in protection of the Italian bell tower ideology) that the local government must be consulted.

But the projects (most of which will never be completed) themselves involve the construction of cities centered around energy and water development projects. Fiat through the Agnelli Foundation has spent much time in theorizing on the Italian city of the 1970's and '80's. The new urban system is to be constructed in a series of subsystems in a strict, scientific relationship between urban planning and organization of production. Secondly, the organization of residential complexes are conceived with different gradations of self-sufficiency. Thus the Agnelli city of the 1980's represents nothing but the Nazi resettled company towns of the 1930's. The cost of these programs, which would result in the de-industrialization of Northern Italy and the massive relocation of millions of workers, is estimated at 8 to 9 trillion lire, more than double the annual business done by Fiat and Montedison put together.

As demonstrated by the outright destruction of German trade unions and all forms of working-class defense organizations upon Hitler's rise to power in 1933, the Speer policies of fascist reconstruction cannot be implemented as long as the building trades unions continue to exist. First, the intricate jurisdiction rules between trades which protect construction workers from speed-up must be thoroughly eradicated. Secondly, the open shop must become the shop of the future in order to knock wages down to the \$60 per week required for the maintenance of the profit rate of the hegemonic faction of capitalists.

Thomas McGlove, president of the New Jersey Subcontractors Association, speaks for the industry

when he unequivocally states: "The escalating economic pressure will help increase the number of open shop firms and this development will force the unions to adopt progressive policies" (i.e., no craft jurisdictions, wage cuts, and no-strike pledges).

Richard Kibber, the Executive Director of Construction for the Business Roundtable, emphasizes that training enough workers with the appropriate skills (i.e., Affirmative Action-type union-busting) will require the removal of restrictive trade union practices. He also actively defended the "primitive *bauweise*" methods.

McGlove further asserted that contracts are merely "instruments for improving productivity." Organized labor and open shop representation is necessary on the "construction team" (euphemism for fascist corporatism). "I predict the time **when trade union organization will be scrapped in order for the workers to remain competitive**" (emphasis added).

Declaration of a War to Kill

In the past weeks, the international forces of the Rockefeller cabal have moved for the final liquidation of the skilled construction unions. Through a wave of lockouts across the North American continent and the mass layoffs of workers in Europe, construction workers are faced with job-loss throughout the advanced sector. The German construction industry is now running at 54 per cent capacity with unemployment particularly high in the Ruhr region. Civil Engineering contracts have fallen by 30 per cent. The Danish Craft Council and Danish Association of Contractors have announced that 30,000 skilled workers will be out of a job by the fall.

In a lockout pattern across the continent, following the pattern set by the recent garment workers strikes, the Bechtel-controlled contractors are moving towards the Brazilianization of the construction industry.

In Canada, a lockout has been jointly set up by the Quebec Federation of Labor (QFL) and Canadian contractors. LaBerge, counterinsurgent head of the QFL, forced the reopening of construction contracts around the cost of living increase precisely at the point that he also stated that construction companies are not doing too well and may never open their sites again.

After a showdown which resulted in a lockout, LaBerge organized squads of roving goons which went throughout Quebec forcing out QFL workers and also construction workers of the rival CNTU. With the reopening of Montreal sites, incendiary leaflets have appeared demanding that the men leave their jobs. A lockout also presently persists in British Columbia, while the Canadian government has already imported British construction workers to work in Alberta construction sites.

In Northern Quebec, 1500 construction workers were thrown off the job for "security measures against sabotage." As any construction worker knows, given

construction financing on the basis of progress loans advanced against the next phase of the project, it is financially virtually impossible — even for the largest construction firms — to stop midway on a building. The only thing such a termination could accomplish is the destruction of the union — a goal which Rockefeller-dominated financial institutions have been willing to pay for. The widespread termination of work at major construction sites in the past months on the flimsiest pretexts demonstrates most graphically the calculated nature of the attack on the building trades unions.

In the U.S., construction workers now face a full-blast attack as the cabal unleashes every possible weapon.

- A violent wave of lockouts has ripped through the country, immediately precipitated by a cement drivers strike which has led to shutdowns in Cincinnati, Kansas City, and Philadelphia. In California a strike of 10,000 carpenters (egged on by a Progressive Labor caucus) initiated a lockout by the Association of General Contractors of 15,000 workers in Portland and over 40,000 in western Washington State. One construction union bureaucrat estimated that there are probably 500 strikes in the industry going on right now.

- Cement drivers in Chicago on strike against the contractor building the Dan Ryan Expressway now face a 24-hour picket line set up by a CIA-organized minority coalition of blacks and Puerto Ricans demanding jobs.

- The bourgeois press has built up a full battery of articles echoing the continued refrain that construction workers' wages are the cause of inflation — a hideous joke under present working conditions.

- In New York City a law passed making a Theodore Kheel (world-renowned labor "mediator" and unionbuster) approved plan for the systematic increase of the hiring of minority workers in construction.

- In the midst of this lockout, the Bechtel-controlled Association of Builders and Contractors brought charges of conspiracy and violence against the AFL-CIO Building and Construction Trades Council and their affiliated craft unions. Their charges specifically cite the use of violence to prevent the hiring of **non-union** men.

Now the apparatus for the fascist control of the construction industry is being consolidated. The Chairman of the Board of Governors of the Building Trades Employers Association, H. Earl Fullimore, has been named chairman of the Board of Urban Affairs of the NYC Construction and Building Industry, a private labor-management group. George Daily, business agent of the Steamfitters Union, has been moved into an executive position of that corporatist structure.

The Future is Now

The present frontal attack on the construction industry with Bechtel-engineered lockouts designed to destroy both workers and small firms is the signal for the further fascist onslaught against the working class. Every

American worker already knows that the present existence of construction workers is the sign of his own future. The destruction of the construction industry today heralds the full de-industrialization of North America.

Out of the ruins of the lives of human beings, the Rockefeller forces will set the working class to the task of building the Fourth Reich. Like the German worker before him, who was forced either to build Speer's monuments to Hitler or to grind himself to death in the

Reich's war machine, the Brazilianized construction worker will be herded to the Rocky Mountain energy development projects in the West.

Today the German worker, who now with renewed hope looks at the rapidly expanding influence of the European Labour Committees around the program of the brute force development of nuclear fusion power, must take the lead in advancing the international united front of the working class which can stop the Rockefeller fascist machine now.

The Swedish Way: Rockefeller's Northern Paradise

June 29 (IPS) — Last month Gunnar Nilsson, head of the Swedish Labor Organization (LO), the trade-union federation base of Sweden's ruling Social Democratic (SAP) party, publicly advocated the Rockefeller cabal's blueprint for the deindustrialization of the advanced sector and the depopulation of the underdeveloped world. In an interview in the May 15 *Svenska Dagbladet*, Nilsson spelled out his vision of the "post-industrial society" (the 1960's anti-working-class phrase coined by CIA futurologists) in which "a new type of socio-technical person" develops the "Zero Growth global solutions" which emphasize "quality of life" over material gains.

A few weeks later, another Rockefeller supporter, Swedish Premier Olaf Palme, frantically denounced the Labor Committees' program for socialist reindustrialization based on brute force development of controlled nuclear fusion power technology. Palme has also recently elaborated proposals for his country's future which couple drastic austerity wrapped in "quality of life" rhetoric with political prescriptions for a "democracy" premised on fascist local control and leaderless groups.

With their adoption of Rockefeller genocidal program, Nilsson and Palme have taken the "Swedish Way" to its conclusion as the model for social fascist society. The recurring use of Sweden as a reference point by the United States' Leonard Woodcock, Canada's David Lewis, France's Francois Mitterrand, along with other spokesmen for the CIA's international "workers' participation" counterinsurgency strategy, already implied what Palme and Nilsson have now made explicit — that the "Swedish Way" since the 1960's meant the **takeover** of that country by the fascist planners of Rockefeller's Tavistock Institute.

Gunnar Nilsson's position as titular head of the Swedish working class is the result of that takeover. Picked by Tavistock to administer the imposition of their

"industrial democracy" (code word for co-participation) on Swedish workers, he was propelled forward as part of Tavistock's intervention into the LO to control and contain the outcome of the strike wave of 1969-70, similar to the Institute's work in France to channel the mass strike ferment which swept over Europe from 1966-70 into support for "autogestion."

Why Sweden?

Among the advanced-sector countries, Sweden was the most appropriate choice for the Rockefeller forces to use as a laboratory for their 1984-style experiments. Throughout the last 40 years of Social Democratic government, the Swedish labor movement has been notable as the most passive in the capitalist world. Under tight centralized control of the working class, there was not one significant national strike from 1946 to 1969!

Since it was founded in the 1880's, the SAP has always been embedded in the reformist tradition of "slow, peaceful change." As the political arm of the trade unions, it never claimed a revolutionary tradition as did the German Social Democracy (SPD). Thus its electoral victory in 1932 represented the recognition by Swedish capitalists of the SAP's counterinsurgency potential.

Their expectations were handsomely rewarded by the no-strike pledge which the LO signed in 1938 with the national employers' confederation, the SAF. Meeting at the seaside resort of Saltsjobaden, SAF and LO representatives emerged after many months with a union promise not to allow any local strikes without LO approval.

This guaranteed complete acquiescence to the SAF's infamous "Paragraph 32," which gives management the right "to freely hire and fire workers, to manage and assign the work, and to use workers from any union or workers outside unions." After a big metalworkers strike in 1945, the LO and SAF agreed to create rubber-stamp factory labor-management "Works Councils," sweetening the "spirit of Saltsjobaden."