

Countering the Syrian war threat to Israel

Proposed U.S. strategic doctrine for the contingency of a Syrian war against Israel

by Lyndon H. LaRouche, Jr.

This is the fourth and concluding section of Lyndon LaRouche's paper released on Aug. 21, calling for an urgent change in U.S. Middle East policy. The first three sections appeared in EIR Vol. 13, No. 36, Sept. 12, 1986, pp.32-45.

4. The Pollard Affair

The chain of events set into motion by the arrest of Israeli spy Jonathan Pollard, has been wrongly portrayed by some in Israel, and elsewhere, as threatening the level of cooperation between the two nations. The contrary assessment is the correct one.

Perhaps it appears curious, at first glance: if the United States does not flinch from a relentless continuation of the investigation, the chain of events which began with the Pollard arrest, should prove to have improved relations between the two states. A vigorous, broad-ranging inquiry provides the opportunity, to replace an existing, but defective basis of cooperation, with a sound one.

Pollard was a member of a ring whose included activities were actions in behalf of the Soviet strategic interest, including the transmission of secrets of the United States to Soviet receivers. In this respect, that ring is of a type called a "false flag" spy-ring, Soviet intelligence operations conducted under the Israeli flag. This latter fact, was the driving motive behind the actions of relevant U.S. circles.

The existence of this "false flag" spy-ring is but a significant, integral aspect of a larger problem. Our point is well

made, and more briefly so, if we limit our attention here, to the intersection of Soviet penetration of Israeli circles with Soviet penetration of the Anglo-American intelligence and policy-making establishments. A convenient, and conspicuous, expression of the connection between the two, is the image of Dr. Armand Hammer's close connections in both Israel and the Royal Household of Britain.

The key term of historical reference, for defining the setting of the Pollard Affair, is "Anglo-Soviet Trust." A correct view of the creation and continuing aftermath of the "Trust," is essential to removing from U.S.-Israel relations that cancer, which Pollard's connections symptomize. Confidence can but be strengthened, by guiding both nations' patriots to unite efforts successfully against the common adversary, which that "false-flag" spy-ring was aiding.

For purposes of economy in reporting, "Trust" should be defined historically, as follows.

Prior to 1917, Venice's Count Volpi di Misurata was among the key coordinators of a curious gentleman from Odessa, Alexander Helphand ("Parvus"), reputed to have been the wealthiest and most important spy of the twentieth century. Parvus, backed by Volpi di Misurata's accomplices in Odessa, Salonika, Aleppo, Venice, and elsewhere, was a key orchestrating figure in both the 1905 and 1917 Russian revolutions.

After the Bolshevik victory, Parvus's organization became an integral part of Soviet intelligence. This involved the famous Fuerstenberg-Hanecki, Feliks Dzerzhinsky, former Parvus asset L. D. Trotsky, Odessa-born Churchill rep-

representative to the Trust, Sidney Reilly, the American-born Soviet agent, Commander Sergius Riis, and others. In effect, the wealthy financier circles which had backed the Bolshevik revolutionaries before October 1917, set up a partnership with the new Bolshevik government. Early, Western figures such as W. Averell Harriman joined this partnership with Soviet intelligence services.

Those points identify the Trust.

One essential key to understanding the Soviet Cheka, and the present-day KGB, is that the Cheka included both Parvus's two sons, and also a number of those former officials of the Okhrana who had been controllers of key Bolsheviks during the years before the October 1917 revolution.

The faction of the Okhrana which ran the Bolsheviks as a secret-police operation, was the same faction which also ran the Odessa-based section of the Zionist organization from the early 1880s onward. These crucial facts force the counter-intelligence specialist to look in several directions.

As this bears directly on the Pollard Affair, we must recognize that the Cheka, and today's KGB, are outgrowths of the Okhrana, especially that section of the Okhrana which had connections to the circles of Volpi di Misurata, rooted in Venice-Moscow-Mount Athos connections dating from approximately A.D. 1440-1453. The more immediate connection between this faction of the Okhrana and Volpi, was via the Venice-Salonika-Aleppo-Odessa channels, the center of those channels in which we find Parvus, Sidney Reilly, and the American Trust partners Sergius Riis and grain-trader Washburn.

The only intelligence specialists who would object to examining such ancient connections, are those amateurish analysts who have no understanding of present events as current history. Culture, and family traditions, transmitted over many generations, are the key to understanding all really important political-intelligence topics.

Within this historical framework, we find the common links of today's KGB and sections of the Irgun. After all, from the early 1880s to the present, is but three to four generations for today's senior officials. As this bears on the Pollard Affair, there have been many active re-enforcements of the connections, such as the "Rote Kapelle" operations, over the intervening period.

In addition to the direct part of the continuity, during the past hundred years, various sections of Jewish movements and leftist organizations, have had complex interactions, and common interactions with financial circles which were either participants in the Parvus-Trust continuity, or of similar profiles. This enlarges, and complicates the scope of the counter-intelligence specialist's work.

The most relevant of such interconnections is the impact of both the Communist International and the pre-existing networks out of which the Comintern was assembled. The travels and connections of M. N. Roy, are paradigmatic. The

Soviet contamination of Jay Lovestone and his circles, bears directly on the immediate setting of the Pollard Affair.

Jay Lovestone came into politics through the League of Industrial Democracy (LID). Like Chicago University, the LID was originally the Midwestern-based U.S. branch of the British Fabian Society. During the early 1920s "underground period" of the U.S. Communist International, Lovestone emerged as an militant of a Communist underground cell at New York City College. By the end of the 1920s, he became the General Secretary of the Communist Party U.S.A., appointed by Soviet dictator N. Bukharin, who vetoed majority support for William Z. Foster.

With the fall of his Soviet sponsor, Bukharin, Stalin dumped Lovestone from the leadership of the CPUSA. Lovestone became the U.S. representative of what was called the "Comintern Right Opposition" (KPO), of old Parvus agent Bukharin, the German Brandler-Thalheimer group, et al. The KPO maintained itself as an asset of the Soviet secret-intelligence services until about 1938, operating under such fronts as the International Rescue Committee and American Rescue Committee. Lovestone established his base of operations in the links among the LID, Meyer Lansky's organization, and the International Ladies' Garment Workers' Union (ILGWU), from which he still operates to the present day. The industrial engineering section of David Dubinsky's ILGWU, under Gomberg, became the principal nesting-place for KPO operatives inside the U.S.A.

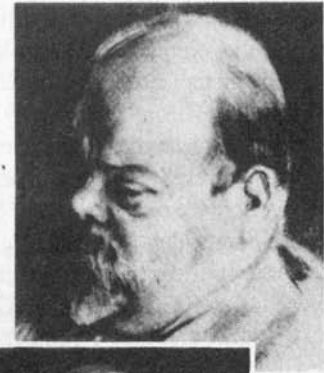
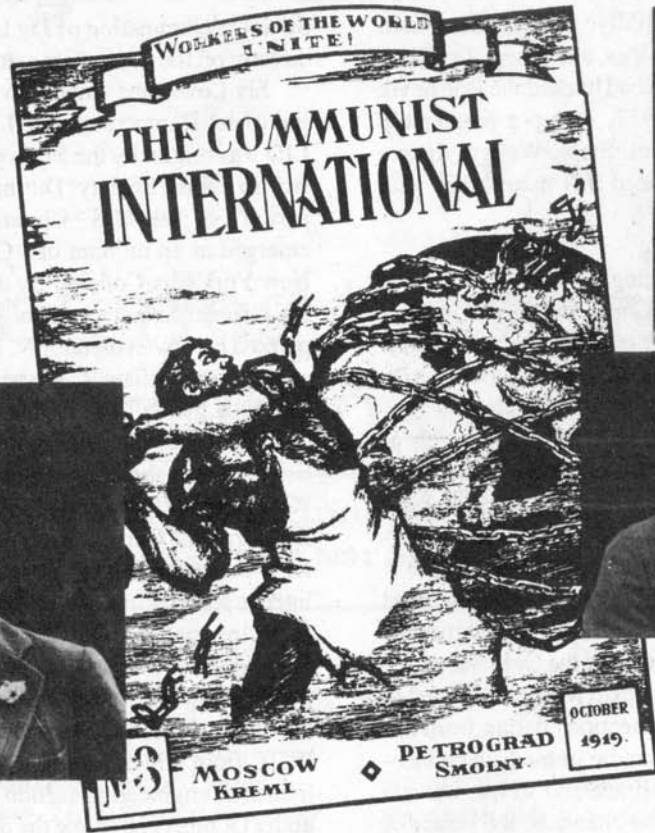
After 1938, Lovestone professed himself a convert to "anti-Stalinism." Under this cover, he penetrated the U.S. intelligence services up to nearly the highest level during the postwar period. Then, beginning 1955, the pre-war "Anglo-Soviet Trust" was revived, by new agreements with N. S. Khrushchov, mediated chiefly through Bertrand Russell. By which time Lovestone's networks were deeply embedded in the AFL-CIO apparatus and the U.S. intelligence establishment.

Large chunks of Lovestone's apparatus are functioning as covert agents in behalf of Soviet drug-trafficking and related interests, chiefly in concert with the Meyer Lansky drug-running apparatus, from inside and outside the U.S. intelligence establishment today. The evidence is massive, and conclusive: "Right-wing social-democrats" associated with LID, are one of the major national-security problems inside the United States today.

These kinds of connections are, and have always been the underside of the connections surrounding the Pollard Affair.

The higher-level connections

Soviet history to date makes no analytical sense historically, until we find the motives on a higher level. That higher level is encountered among the wealthy rentier-financier interests of the West, which backed the radical movements



Some of the top figures of The Trust: clockwise from upper right, Alexander Helphand ("Parvus"), Fyodor Dostoevsky, V. I. Lenin, Bertrand Lord Russell, and Armand Hammer.

prior to 1917, and were represented as Trust partners of the Bolsheviks during the 1920s and 1930s.

The recent public attacks upon Britain's Prime Minister Thatcher, by orders of Queen Elizabeth II, included the representation by Royal Household spokesman Haseltine, that the Queen's philosophical outlook in politics is "left-leaning." This forces attention to several well-known facts which British custom had previously avoided emphasizing in newspaper accounts.

Prince Charles is a defective personality, in the extreme, presiding over a circle within the Royal Household which is best known to the public for the numbers of the circle dying of AIDS. He is under the strong direct influence of Soviet intelligence's Dr. Armand Hammer; and, his defects are widely attributed to the influence of his notorious great-uncle, Lord Louis "Dickie" (Battenberg)-Mountbatten. This intersects those Soviet connections of former Prime Minister Harold Wilson, and Wilson's personal "mafia," a connection which grew so embarrassing, that Wilson, according to reliable informants, was encouraged to resign discreetly, as alternative to public exposure of this treasonous connection. The Soviet KGB connections of Wilson's "mafia," are a shamelessly open fact to the present day.

It is convenient, in counter-intelligence work, to identify two approximately distinct connections to Moscow, among aristocratic and rentier-financier families of Western Europe. The first group of connections, is predominantly Anglo-American, including the Royal Family's circles, and the circles of the late W. Averell Harriman and McGeorge Bundy in the U.S.A. The second is predominantly central European, based in the families whose ancestry is traced from the aristocracy and nobility of Venice's, nominally Hapsburg, Holy Roman Empire. The two overlap, both in northern continental Europe, and by way of Switzerland interfaces.

One of the key facts which help the analyst to begin to understand this higher level of the Trust connection, is the fact that many of these Soviet partners were also backers of either Mussolini, or Hitler, or both.

The case of the late W. Averell Harriman, is exemplary. Harriman secured his membership in the Trust, through the personal sponsorship of Leon Trotsky, and later renewed and expanded this through a close personal relationship with Joseph Stalin. By no later than 1927, the *New York Times'* front page was quoting Harriman's praises of Benito Mussolini. The same Harriman was a key U.S. backer of Adolf Hitler, prior to Hitler's "legal coup d'etat." Harriman's family then

supported Hitler publicly, with special praise for the Nazis' "racial hygiene" policies.

Winston Churchill established a personal relationship with fascist dictator Mussolini during the 1920s, and continued to praise Mussolini into 1938. It was Churchill's spy, Sidney Reilly, who worked closely with Trotsky in setting up the Trust. It was Churchill who pushed President Roosevelt into the 1943 Yalta agreements, establishing the greatly enlarged post-war Soviet empire.

The most important institution pushing for the West's submission to the Soviet empire today, is Venice's San Giorgio Maggiore, the center around which the central European aristocracy and noble rentier-financier interests orbit.

The miseducated intelligence analyst throws up his hands, pushing such facts aside, because he and his (perhaps) Harvard-educated peers refuse to accept such embarrassing evidence. "Aristocrats? Surely, these are arch-conservatives! You suggest that some of the most socially reactionary rentier-financier circles of central Europe are pro-communist! I prefer to pretend I have never seen these facts. It sounds like some crazy conspiracy-theory to me."

Conspiracy, dear fellow? Who is speaking of "conspiracy theories"? These are nothing but simple, conclusively documented facts.

The poor fellow retorts with a hysterical denunciation of "conspiracy-theorists" in general, turns demonstratively on his heel, and returns to his customary bungling. He is one of those fellows whose delusions of being part of a privileged class, persuade him, that he need not face unpleasant realities.

Both Bolshevism and Nazism, like fascism in general, and theosophy as well, have the common characteristic of being creations of those circles on whose behalf such notables as Nietzsche and theosophist Aleister Crowley proclaimed the twentieth century "The Dawning of the Age of Aquarius," at the turn of the present century.

To get to the bottom of this sort of enterprise, one must peek at Alex Münthe's Isle of Capri, and observe Maxim Gorki creating Bolshevism in the Grotto there. One must see Hermann Goering speaking with Münthe, there, pleading that Münthe sell the site of Tiberius's residence to Hitler, explaining to Münthe that Hitler was the reincarnation of the Roman emperor who ordered his nephew-in-law, Pontius Pilate, to execute Jesus Christ.

To understand these aristocratic and rentier-financier families, in partnership with Parvus, Trotsky, and Bukharin, and often also members of the Thule Society which created Hitler, it is indispensable to recognize that those families were the same combination of interest behind the creation of the Holy Alliance, at the 1815 Congress of Vienna. For Nazism or Bolshevism as such, these families as a whole care not a fig. Nazism and Bolshevism are, like theosophy, something which these families deployed and used; they were not

really supporters, but rather users of these movements.

To understand the Holy Alliance more deeply, we must note that these families were the same collection behind Orange and Marlborough (Churchill) during the "cabinet-diplomacy" wars of the period of Louis XIV and Queen Anne. These were the families behind the Hapsburg rampages of 1527-1653. They were, in spirit, and also significantly in flesh, the same families centered around the Black Guelph and Lombards of the late fifteenth and sixteenth centuries, who plunged Europe into the fourteenth-century "New Dark Age."

The continuity of the guiding hand consistently behind each of these developments over the past six centuries, is more precise: San Giorgio Maggiore and Mount Athos, the tradition and black political arts of the Syrian Magi in modern, pseudo-Christian disguise.

"New Age"? Short-hand for Nietzsche's and Crowley's "Age of Aquarius," the age of Dionysos and Lucifer. Otherwise, "New Dark Age," as in mid-fourteenth-century Europe. Otherwise, a European version of al Ghazali's book-burning "The Destruction." The setting is altered, but the policy is the revival of a very ancient one, one which has surfaced, either as partial success, or frustrated attempt, once or more during each century of medieval and modern history.

It is said, that such aristocrats and rentier-financier nobilities are "conservatives." To an American, this word might signify something which comes in a jar. In politics, to an American, it ought to signify one who adheres to the institutions of our federal Constitution of 1787-1789, and to traditional, family-centered, moral values; this distinguishes such "conservatives" from those liberals or radicals who are distinguished by efforts to subvert such values. That political usage of "conservative," has nothing to do with such aristocrats and rentier-financier families (although the impression of something fruity, which comes in a jar, is sometimes conveyed).

In Central-European usages, "conservative" is used as the Nazi Dr. Armin Mohler defines it in his fascist apology, *The Conservative Revolution*, in Germany. In this usage, it means either simply "feudalist," or something more barbaric, as the Nazis intended it. The modern usage of the term there, it signifies, most broadly, one, like Henry A. Kissinger, for whom the policies and social order of the Holy Alliance, are utopia. These families are "conservative." That, indeed, is the essence of those who used Nazism and Bolshevism as battering-rams of destruction against republican institutions.

Western counter-intelligence must be based inclusively, on a comprehension of four factors of the Soviets' foreign influence and operations:

- 1) What may be fairly, and conveniently dubbed "The Parvus Syndrome," as Parvus's pre-October 1917 operations define the matrix on which the Trust re-

relationship between Bolsheviks and relevant Western aristocratic/financier families.

2) The Communist International, its present-day disguises, as predominantly agencies of the Trust, rather than of the Bolshevik regime more narrowly.

3) The Nazi-Bolshevik interaction, pertaining to the Nazi networks' role within Soviet foreign intelligence today.

4) The very special sort of historical-philosophical world-outlook characteristic of the wealthy families associated with the Trust, Nazi, and other "New Age" movements.

The first of these we have already defined, summarily, have touched upon the second, in the Lovestone case, and have touched upon the fourth. We turn attention now to the relevant features of the third, and then supply the needed added observations on the second and fourth points.

Close examination of the axiomatic assumptions underlying both Bolshevism and Nazism, provides proof that the usual representation of the differences between them, as opposite extremes, is predominantly myth. As Dr. Armin Mohler documents, Nazism was not a German cultural phenomenon, but the importation of the Russian mysticism of Fyodor Dostoevsky, into the German language. (So, why shouldn't we have expected the Nazis to have anti-Semitic pogroms? All such Russians do; racism is inherent in the axe-wielding culture of "Holy Mother Russia.")

Along the routes of the Byzantine satraps, the Varangians, Gnosticism in various forms, including Arianism, was spread into the Germanic tribes to the north. These heathen barbarians served as Byzantium's principal agency of low-intensity warfare against Augustinian civilization in France, England, and Ireland. Charlemagne's counterattack against this heathen pestilence, included a campaign to civilize the Saxons. The recalcitrants among the Saxons fled northward, establishing a base in Jutland, preyed upon the adjoining region of what is called Scandinavia, and became known to westerly Europe as "Vikings," "Northmen," and "Normans." The Thule Society, and its creation, the Nazis, were obsessed with returning Germany to the ancient faith of these heathen Saxons, the Vikings.

They struck upon, or were instructed in, the fact, that the truest approximation of that heathen culture was the *Raskolniki* culture apotheosized by Dostoevsky. Many of the ideological trappings of Nazism, were adopted directly from Dostoevsky's writings, through the circles of Moeller van den Brueck; this included the adoption of Dostoevsky's mystical slogan, "Third Roman Empire," which translates directly into German as "'Third' Reich."

Also typical, is the role of Alfred Rosenberg. Rosenberg was a protégé of a group of Russian aristocratic families from Livonia, including the family of the uncle of Sweden's

lately-deceased Olof Palme, August von Knieriem, the founder, and I. G. Farben director of the Auschwitz slave-labor center. These were families which obtained their titles through service to the Czars, whose specialty was the Czarist agency to which the Okhrana was accountable. Rosenberg completed his academic education in Moscow, under the Bolsheviks, and appeared in Bavaria in the service of the Thule Society of Houston Stewart Chamberlain and Karl Haushofer, the creators of Nazism and sponsors of Hitler. The attempted "russification" of German culture, with Wagner's Viking and Celtic-Gnostic pornographies added in, was the department assigned to Rosenberg.

From the beginnings of Nazism, the Nazis and Bolsheviks swapped saliva. In northern Germany, the principal foundations of Nazism were the "national bolshevist" currents associated with the Thurn und Taxis-linked Strasser brothers, which supplied Jesuit-trained Joseph Goebbels as Nazi propaganda minister. The first foreign support to German fascism in the north came from the Comintern office of former Parvus agent Karl Radek.

The Soviet intelligence service, the Cheka, directly backed Hitler's coup-aspirations during the early 1920s. Later, in Berlin prior to Hitler's "legal coup d'état," the Communist and Nazi parties swapped large portions of their memberships, back and forth.

There were differences between Communists and Nazis. Marxian Communism was a splinter taken out of the international social-democracy. As the social-democracy's power-base was organized labor, this sociological feature of the "left social-democrats," was carried over into the traditions and tactics of the early Communists. The mass-base of the Nazis' recruiting, was the "rootless ones," demobilized, largely unemployed veterans, returning, rootless, and without the impulse to put down roots, from the bestiality of a protracted World War I. As the Communists also recruited from these rootless ones, the Communists and Nazis tended to exchange these portions of their memberships, back and forth. Otherwise, there was more of the indicated sort of sociological conflict between the more root-oriented Communist trade-unionists and those rootless ones who hated trade-unions as part of the hated "old society."

That distinction between communists and fascists still exists, to some degree, today, especially in Western nations, although in a diminishing degree since the middle 1960s.

Both the Nazis and the Bolsheviks, from the beginning, envisaged a fusion of Germany and Russia, to constitute a united force for world-conquest. Bolshevik imperialism, has made the assimilation of Germany its key strategic objective, down to the present day. The Nazis saw the assimilation of Russia as the indispensable key to world-conquest. Both agreed, on unifying the forces of Russia and Germany for world-conquest. They disagreed, whether the capital of this empire would be Berlin or Moscow. Thus, on the one side,

the tendency for collaboration against the hated West, from the beginnings of fascism in Germany, and the beginnings of the Soviet state. Thus, on the other side, the inevitability of the Nazi invasion of Russia.

Now, the Bolsheviks have won that war, and Germany placed more and more in the status of the Soviets' favorite satrapy. Since Andropov consolidated his position as head of the KGB, the KGB addresses the East Germany "Stasi," as "Mitarbeiter," a status not afforded otherwise even to the Bulgarians. The old Nazi networks, centered around old fellows such as Lausanne's François Genoud, have accepted the result—for the immediate future, at least; they are now also "Mitarbeiter" of the Soviet KGB.

If the old Nazis have now accepted Bolshevik supremacy, the Bolsheviks have reciprocated ideologically. Over the past two decades, the Soviets have become increasingly, openly fascists. During the second half of the 1960s, the wage-struggle was pushed aside in Communist doctrine, in favor of neo-Malthusianism and particularist forms of insurgencies. The fascist doctrines of insurgency endorsed by Bolshevik assets Rudolf Hess, Rudolf Steiner, and the von Reventlows, at the 1920 Baku Comintern conference, are today the leading dogma of Soviet low-intensity warfare operations. Bolshevism has converged upon its axiomatic, "New Age," foundations.

Silly intelligence analysts, and others, ask: "Are you saying that Nazism has moved from right to left, or that Bolshevism has moved from left to right?" Silly, silly, fellows, with their mythologies of the right and left as opposite extremes. "Extremism"! What a silly word, fit only for the vocabulary of very silly liberals. "Right" and "left"! What silly words. The rival sibling children of Satan, were a better term, more in agreement with Nietzsche's doctrine of Dionysos (and, the Emperor Tiberius) as the "anti-Christ," or Crowley's and Rudolf Steiner's preference for the Mithraic Lucifer as the "anti-Christ." "New Age," dear silly people, "New Age."

Nazism and Bolshevism differ not as diseases, but as the common virus infects differing social stratifications. Once the victim becomes more the disease than his former self, the differences tend to vanish. The pure strain of the disease, is brewed at such locations as Mount Athos and San Giorgio Maggiore.

Now, as to the Communist International: The irony of Stalin, is that his purges set back the Trust's world conquest by at least two generations. Every evidence points to Stalin as even more committed to Bolshevik world-conquest than Trotsky. The difference was, that nationalist Stalin, unlike "cosmopolitan" Trotsky, refused to sacrifice "Holy Mother Russia" for Parvus's dream of "permanent revolution." Similarly, Stalin refused to tolerate any longer Bukharin's policy, of looting Russia for the sake of the greater profits of the foreign partners in the Trust. To that degree, Stalin ruined

the entrenched power-base of the Trust inside Russia, by methods copied from Czar Ivan Grozny. These purges temporarily wrecked the Communist International, and set the Trust's effort at world-conquest back at least two generations.

The Communist International was, from the outset, a political apparatus controlled by the Bolshevik's foreign-banker partners, rather than the Russian Bolsheviks. Thus, after subtracting the Trotsky-linked "Left Opposition," and the Bukharin-linked "Right Opposition," there was very little of the Comintern apparatus remaining. In the main, these two foreign-banker controlled "Oppositions," were the bulk of the Comintern's apparatus.

The shifting relations between Moscow and the Oppositions, are key to Western nations' Soviet counter-intelligence competence today.

As much as was left firmly in Moscow's hands during the 1938-1953 interval, was centered in a few old Comintern figures, around the Finnish cult-mystic Otto Kuusinen, and Hungarian Eugen Varga. During the post-war Stalin period, these two led an effort to have the Comintern's foreign-intelligence apparatus rebuilt. Stalin rebuffed the proposal at that time.

After Stalin's death, Khrushchov accepted the offer from the Western Trust partners, mediated chiefly through Bertrand Russell. Four gestures from Khrushchov were crucial. The 1955 London conference of Russell's World Parliamentarians for World Government featured four Soviet representatives bearing a clear signal to the Western Trust partners. Khrushchov's famous 20th Congress "de-Stalinization" address, was a major second, with Khrushchov's abortive signal of possible, posthumous rehabilitation of London's favorite, Bukharin, an added grace-note of the period. The opening of the Pugwash and other back-channels, was a substantive step. Finally, Moscow acted upon Kuusinen's and Varga's proposal: The Comintern intelligence apparatus was reborn under the title of IMEMO.

By 1958, the Anglo-American section of the Trust partnership, typified by Harriman, the Rockefellers, and McGeorge Bundy, had struck a firm bargain with Khrushchov, a bargain called the doctrine of "nuclear deterrence." Old Comintern assets were reactivated, by mutual agreement. 1938-1953 "anti-Stalinist" pedigrees provided some of the reactivated networks excellent covers for continued penetration of the Western intelligence establishment.

The significance of the Pollard Affair, is the effect of collaboration between Soviet penetrations of Israeli and U.S. intelligence establishments. The "Parvus Syndrome," and the reactivation of Trust partnership, are the keys to this. The method of counter-intelligence required, is to pull at the most accessible loose threads, thus outflanking the combined, interacting networks, weakening them, and making possible a step-by-step eradication of the main parts of the

combination as a whole.

The fact that Israeli-denominated "false flag" spy-rings are a main point of initial concentration, is rather inevitable. After all, it is a network of foreign spies, including well-known cases who are, therefore, caught at discretion without too much effort. One or two clear cases, showing that an Israeli spy-ring has done services for Moscow, is adequate basis for making initial selections. Otherwise, the method is, to shake the tree, and inspect the fallen apples for Soviet worms. Some wormy detainees will sing a song, giving some names, dates, and places. This leads to new detentions of potential song-birds, and a broader round-up. There is really no better way to proceed.

In the process, some non-Israelis crop up in the recitations and documentation, leading to some important U.S. figures.

Take, for example, the case of Soviet asset Jon Speller, of Robert Speller & Sons. Speller, a professed product of Trust organized Sergius Riis, and a man with professed Bulgarian credentials, is a very good choice of loose thread. He is of more than middle importance to any dedicated professional spy-catcher who dreams of telling his grandchildren, "How I brought Jon Speller in": a worth-while catch. He is readily catchable on the basis of his shameless advocacy of the Khalistan narco-terrorism gang, and his role in turning the office of Senator Jesse Helms into a national-security scandal. Among Speller's accomplices, is the self-styled Anti-Defamation League (ADL), better known to insiders today as "Admirers of Dope-Dealer Lansky." They are partners with Speller in enterprises including sponsorship of the Khalistan narco-terrorists.

Pull the string. Pull yet another string. Tug by tug, the dirty fabric is unwound. If the investigation follows a road-map, of the sort indicated by our outline here, serious police-work of a counter-intelligence sort, brings us toward our goal. Key words are "Parvus," "Trust," "Comintern," and "New Age." Goal is defined by knowing that one has not touched the inside, until some big-name oligarchical families are in the dock, at least no less respectable than the House of Windsor.

Does anyone delude himself, that we ought to condone such matters, simply because it does not fit the image which Israel's official and self-appointed public-relations spokesmen find pleasing? Is anyone so deluded as to imagine, that Moscow's agents are a patriotic asset of Israel? Does Israel desire to warm poisonous snakes in its bed? Does anyone imagine that transforming intelligence into a mere "game" of play and playback, is any better than the practice of "cabinet warfare" in military affairs? Which is Israel's greater self-interest, hiding scandals from the goy, or cleaning out traitors, even if it means an embarrassing public scandal or two? Before the invention of the automatic clothes-dryer, the penalty of sleeping on clean sheets, and wearing clean underwear, was to display intimate items to one's neighbors,

on the clothesline.

The faster, the more wide-sweeping, the higher the places touched, the better, the cleaner, the safer. Is it better to feed a family, by shooting mice, or bigger game? The purpose of catching little fish, is to use them as bait to trap big fish. The business is painful surgery, for the United States as well as Israel, and for a few other nations besides. The surgery is necessary; we shall not be healthy unless we get it over with as quickly as possible.

One must never think of the oligarchical families as spiritually human. Think of them as they think of themselves, and then you will understand them and their methods. The oligarchy thinks of each family, or its *fondo*, as like a god or demi-god of mythical Olympos. "Why do such gods exist?" a normal person asks. Well he should ask; their social affairs among themselves, are essentially as immoral as the modern "jet set" typifies. What possible good can their existence provide to the world? Yet, useless as they are, Olympos insists absolutely on the principle, that it must not only exist, but must reign over this planet forever. To that purpose, and only that purpose, the gods of Olympos briefly interrupt their killing and sodomizing one another, to crush with one bloody fist anyone who challenges the eternal supremacy of the families' Olympos. They would rather destroy the world, than allow a world to exist, in which Olympos does not reign. The secrets of the oligarchical families, are written in the tragedies of Aeschylus, works which must be mastered as precondition for professional status as historian, political leader, or counterintelligence professional.

The republican current is Aeschylus' "Prometheus Unbound." Especially the republican Judeo-Christian heritage of Western European civilization. So it seems to Olympos. Ultimately, it must be decided, whether the republican or the oligarchical current rules this planet. No perpetual, "manichean" coexistence between the two, is possible. So, the gods of Olympos would destroy every institution infected with the virus of republicanism, especially Judeo-Christian republicanism. For them, civilization must be purged, from end to end, by the scourge of an age of al Ghazali-like destruction, the "Age of Aquarius," the "Age of Dionysos and Lucifer."

For the few to destroy the many, the few must induce the many to destroy themselves. The Syrian Magi, and the Chaldeans before them, understood such black political arts. The chosen instruments include various forms of Gnosticism, Malthusianism, theosophy, Bolshevism, and Nazism. That hydra-headed oligarchy, we must strike in the head.

If we see the proper objective of pursuing such matters as the Pollard Affair along the trail to the end, we should gloat over the certainty that such developments benefit both our nations, and the entire Middle East as well. To work together to any such good ends, will never weaken cooperation, but, rather, greatly strengthen it.

"The two arrested Israeli spies, Jonathan Pollard, and his wife, are merely third-level figures in a ring working under the sponsorship of Israeli bully-boy Ariel Sharon. The ring reaches high into the ranks of the Executive Branch of the U.S. government.

This is not merely an Israeli spy-ring; it is a spy-ring operating under the Israeli flag, but controlled by a network of Soviet agents. . . ."

An EIR Special Report

**Moscow's
Secret Weapon:**

**Ariel Sharon
and
the Israeli Mafia**

In this remarkable, thoroughly researched document, you will finally learn the truth about:

- **Billionaire Soviet agent Armand Hammer**, and the complex of wealthy financial figures known as "the Trust" who are the power behind would-be dictator Sharon.
- **The role of Henry A. Kissinger** in the notorious "landscam" real-estate swindle in the Israeli-occupied West Bank territories.
- **The history of the Luzzatto family** of Venice, the Recanati, and the Syrian Jewish families of Aleppo, the Jewish fascists of the Irgun, and the noose of organized crime tightening around Israel today.
- **The plot to set off a new Middle East general war**, by blowing up the second holiest site of Islam, Jerusalem's Dome of the Rock Mosque. The facts, exposing the plot and the plotters, some never before published anywhere, are the results of an investigation covering four continents, an investigation which risked the death of the investigators.
- **The massive coverup of the Pollard case itself**—the facts which Secretary of State George Shultz, and especially Undersecretary of State Elliot Abrams, are fanatically determined to bury.
- **The anatomy of a JDL terrorist**, Mordechai Levi, and Levi's role as a joint-asset of the FBI and the Anti-Defamation League, as well as an asset of Sharon's cohort "Dirty Rafi" Eytan.

148pp.

Order your copy today!

Price: \$250

From

EIR News Service

P.O. Box 17390

Washington, D.C.

20041-0390