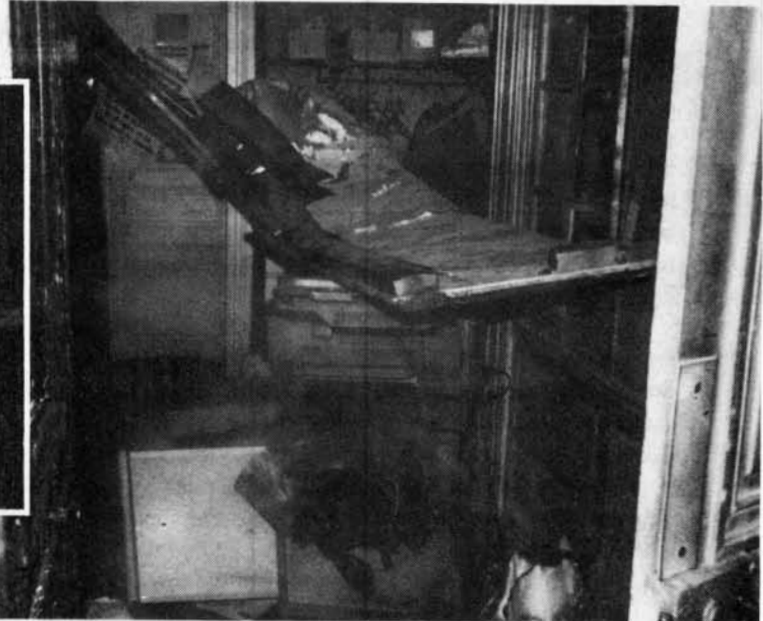


## Soviet Establishment

*Mikhail Gorbachov (right), whose Oct. 4 speech in Moscow used an "ID format" slogan to eliminate LaRouche; Anatolii Dobrynin (below, left), boss of Soviet Central Committee international department, stationed in U.S. as ambassador throughout rise of LaRouche movement; Georgii Arbatov (below, right), head, U.S.A.-Canada Institute, Moscow, hysterical foe of LaRouche; Fyodor Burlatskii (below), member, foreign policy inner circle in Kremlin, first to blame LaRouche for the SDI.*

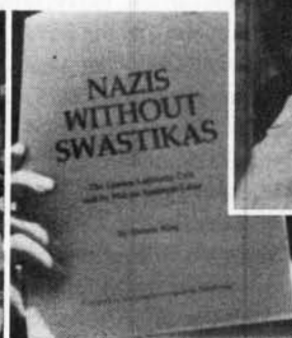


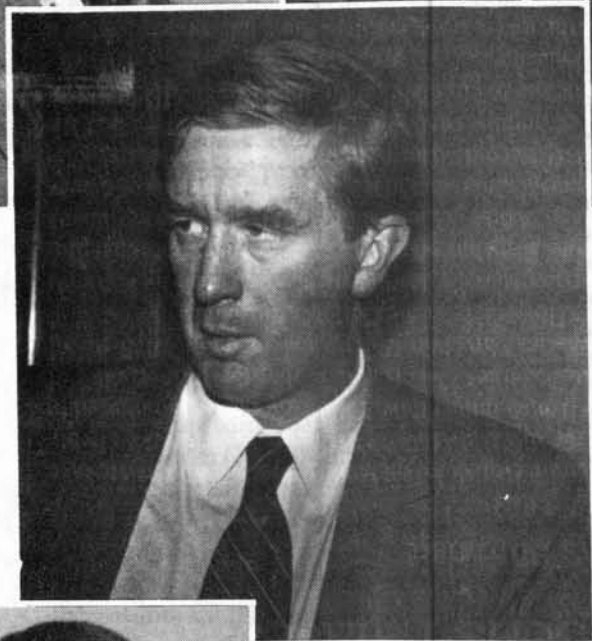
# Who's Out to Shut Down LaRouche



## U.S.-Gutter Level

*Homosexual activists at "Stop LaRouche" rally in California (left); John Foster "Chip" Berlet (center), former editor of dope lobby's High Times magazine, first attacked LaRouche in 1980 article for anti-drug movement; drug lobbyist scribbler Dennis King (inset); Irwin Suall, of the drug mafia's Anti-Defamation League, who hired King and Berlet for anti-LaRouche drive (right).*





*Right: On Oct. 6, Weld-directed FBI agents demolished this door of management company for LaRouche publications in Leesburg with sledge hammer, ignoring open door next to it. Left: Door of EIR offices in Paris, bombed by Soviet-run terrorists last April 6.*



## U.S. Liberal Establishment

*Donald T. Regan (above, left), protector of drug-money laundering interests, White House chief of staff, wants to stop LaRouche influence on defense policy, potentially on economic policy; George Shultz (above, right), second generation agent of the Anglo-Soviet "Trust," sees LaRouche as obstacle to SDI sellout; William Weld (left), head, Criminal Division of Justice Department, ordered illegal anti-LaRouche raid; Katharine Graham (far left), Washington Post, whose newspaper admitted purpose of raids is financial shutdown of LaRouche; NBC-TV (shown below: newscaster Tom Brokaw), which began libels in attempt to set up LaRouche for murder in 1984.*