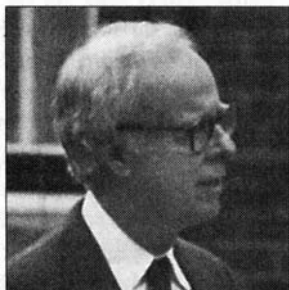


# A rogues' gallery: from A to Z in the 'Get



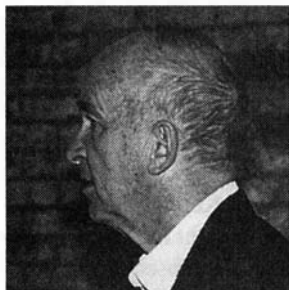
Mira Lansky Boland

**Mira Lansky Boland:** Washington, D.C. fact-finding director for the Anti-Defamation League (ADL). Investigated by San Francisco District Attorney for illegal spying.



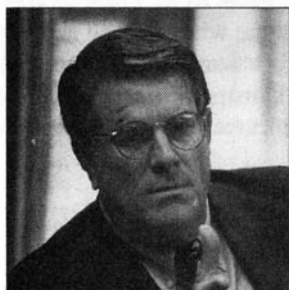
Judge Albert V. Bryan, Jr.

**Judge Albert V. Bryan, Jr.:** U.S. District judge in Alexandria, Virginia. Presided over LaRouche railroad trial. Founder of international gun-running company Interarms.



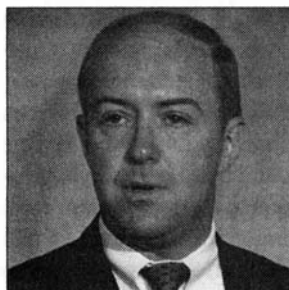
Charles Bryant

**Charles Bryant:** Former Virginia State Police investigator. Former IRS Special Agent. Tampered with witnesses in Virginia LaRouche cases.



J.C. Herbert Bryant

**J.C. Herbert Bryant:** Founder of Armored Response Group US (ARGUS), a paramilitary organization that provided equipment for the Oct. 6, 1986 raid on companies associated with LaRouche in Virginia. Buddy of prosecutor Henry Hudson. Convicted in 1994 for illegally impersonating a federal officer.



Henry Hudson

**Henry Hudson:** U.S. Attorney in Alexandria, Virginia. Prosecuted LaRouche. Committed fraud on the court in bankruptcy proceedings. Headed the U.S. Marshals Service during the shootout at Randy Weaver's cabin in Ruby Creek, Idaho.

**Hubert "Skip" Humphrey III:** Attorney General of Minnesota. Tied to organized crime. His investigators in the LaRouche case were caught collaborating with kidnapers linked to the Cult Awareness Network (CAN), and lying in court.

**John Isom:** Sheriff of Loudoun County, Virginia.

Invited the ADL into the county. Investigated by the FBI for financial corruption.

**Murray Janus:** National commissioner of the ADL. Caught attempting to bribe Judge Clifford Weckstein, presiding judge in the Commonwealth of Virginia's LaRouche cases. Now under indictment for bribery in connection with sexual assault charges against his law partner.

**John Keeney:** Assistant Deputy Attorney General, involved in Cointelpro and national security operations against LaRouche in the 1970s. Approved use of multiple prosecutions against LaRouche. Blocked Justice Department review of prosecutorial misconduct in the LaRouche case.

**Galen Kelly:** Professional kidnapper. Served 16 months in prison for his role in a CAN-linked kidnapping. Participated in the brainwashing of prosecution witnesses in LaRouche case.

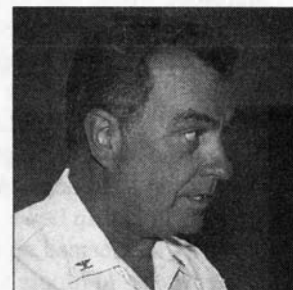
**Cynthia Kissner:** Executive director of Cult Awareness Network. CAN associates involved in the LaRouche case have been investigated and/or convicted for kidnapping and conspiracy.

**Henry A. Kissinger:** British agent of influence. Initiated "Get LaRouche" task force.

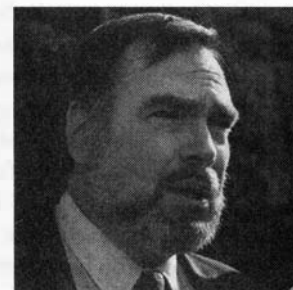
**Patrick Lance Lydon:** Internal Revenue Service special agent in charge of LaRouche case. Obstructed prosecution of violent CAN kidnapper Galen Kelly.



Hubert "Skip" Humphrey III



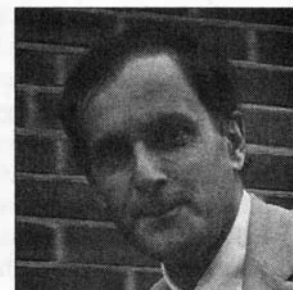
John Isom



Galen Kelly

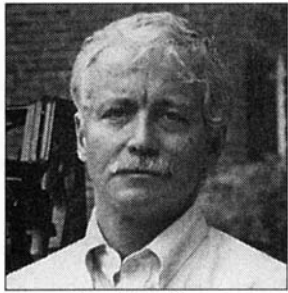


Henry A. Kissinger



John Markham

# LaRouche' task force



Donald L. Moore

**Pat Lynch:** Former NBC-TV reporter. Conduited prosecution slanders to the media. Helped create brainwashed prosecution witnesses.

**Donald L. Moore:** Former sheriff's deputy and Special Deputy U.S. Marshal. Investigator in LaRouche case who conducted illegal break-ins. Pled guilty in connection with a CAN-linked kidnapping. Served eight months in prison.

**John Markham:** Assistant U.S. Attorney in Boston and Alexandria. Prosecuted LaRouche. Former member of satanic cult. Defended CAN-linked kidnapers.

**Oliver North:** Used his illegal gun- and drug-running operation to attack LaRouche.

**Mark Rasch:** Former Justice Department staff attorney in Criminal Division, Fraud Section. Prosecuted LaRouche. Now an attorney with Arent Fox of Washington, D.C. Represents ADL. Defends CAN-linked kidnapers.

**Oliver "Buck" Revell:** Former deputy head of FBI. Used the ADL to circumvent restrictions on FBI operations.

**James S. Reynolds:** Former senior legal adviser in Justice Department's General Litigation and Legal Advice Section (GLLAS), now heads Terrorism and Violent Crimes Section, which oversaw Waco massacre. Approved illegal use of fraudulent bankruptcy proceedings in LaRouche case.

**Mark Richard:** Assistant Deputy Attorney General. Supervised raid in Waco,

Demjanjuk case, LaRouche case.

**Kent Robinson:** Assistant U.S. Attorney in Alexandria. Prosecuted LaRouche. Now AUSA in Portland, Oregon.

**Michael Rokos:** Former president of CAN. Harassed LaRouche financial supporters. Arrested for soliciting undercover police officer for perverted acts.

**John Russell:** Assistant Virginia Attorney General. Prosecuted LaRouche associates in Virginia. Committed perjury at the kidnapping conspiracy trial of his investigator Donald L. Moore. Investigated, but never charged.

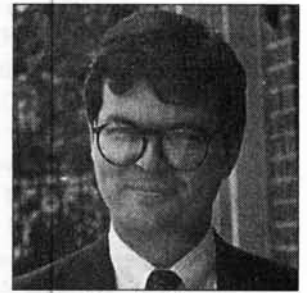
**Mary Sue Terry:** Former Virginia Attorney General. Prosecuted LaRouche associates in Virginia. Even the FBI called her "politically motivated." Lost bid for governorship in a landslide. Currently washed up.

**John Train:** New York investment banker. Presided over planning meetings for international slander campaign against LaRouche.

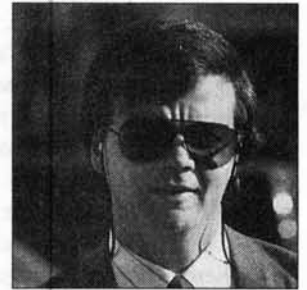
**Judge William Webster:** Former head of FBI. Followed Kissinger's orders.

**Judge Clifford R. Weckstein:** Presided over LaRouche cases in Virginia. Refused to remove himself from the case, despite exposure of his ties to prosecution partner ADL.

**William Weld:** Former U.S. Attorney in Boston and Justice Department Criminal Division head 1986-88. Prosecuted LaRouche. Now governor of Massachusetts. Scion of dope- and slave-running Weld family.



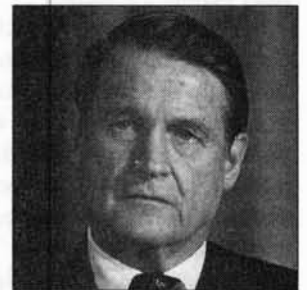
Kent Robinson



John Russell



Mary Sue Terry



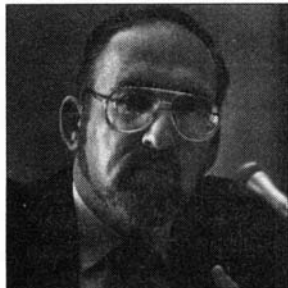
Judge William Webster



William Weld



Oliver "Buck" Revell



Mark Richard