

EIR Special Report

Syria's role as the center of world terrorism

by Lyndon H. LaRouche, Jr.

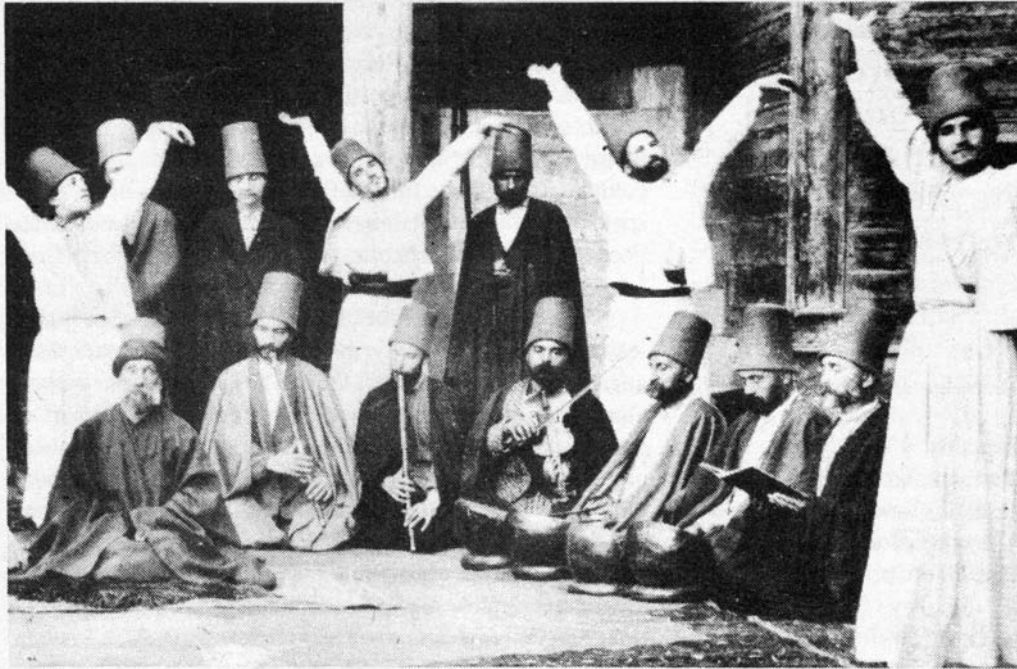
During recent weeks, it has been proposed that the U.S. State Department officially remove Syria, the key Soviet agent of influence in the Middle East, from the list of nations complicit with international terrorism. The proposal must be prevented, and ridiculed: Since the eleventh century A.D., up to the present day, Syria has been the national homeland of that Sufi model of terrorism which has been increasingly rampant throughout the world since the end of the 1960s. The Syrian intelligence service is among the most sophisticated and bloody-handed intelligence services in the world today. The superior capabilities of this dangerous intelligence service are derived chiefly from the massive indoctrination of Syrian intelligence-service members in the tradition of the famous Sufi mystic, Hassan e' Sabbah, the founder of the deadly cult of the Assassins (*Hashishins*). It was through collaboration with Syrian intelligence that the present-day international terrorist groups were trained and launched at the beginning of the 1970s; it is Syrian intelligence which has systematically butchered most of the leading members of Yasser Arafat's faction of the PLO, and it is in coordination with Syrian intelligence that Iranian, Soviet, and other agencies deploy their terrorist operations into Western Europe, India, and the Americas today.

To understand the psychodynamics and coordination of international terrorism today, one must first recognize that present-day international terrorism and Sufism are one and the same, and that Syria is the historic and present center of every recurrence of this variety of terrorism, from the eleventh century A.D. to the present time. Hence, to take Syria off the list of nations linked to international terrorism, would be an act of disarming U.S. intelligence and law-enforcement agencies against the present, Soviet-directed terrorist assault within Western Europe, and the Americas.

The most essential historical background is as follows:

Sufism and the Assassins

Sufi mysticism was originally launched during the middle of the eleventh century A.D., as a covert intelligence operation of Byzantium against the compet-



The Sufi cult, based in Syria and Alexandria, is the core of international terrorism. Shown are Sufis of the Mehlevi order of Whirling Dervishes, during the Ottoman Empire.

ing power of the Baghdad and Fatimid caliphates. The two leading figures of Sufi insurgency were the neo-Asharite al-Ghazali and his Alexandria-trained ally, Hassan e' Sabbah. The chief target of the operations of both the Khomeini-like al-Ghazali and Hassan e' Sabbah was the Persian Islamic faction of the great physician, statesman, philosopher, and scientist ibn Sina (Avicenna). Hence, Hassan e' Sabbah first based his terrorist headquarters in mountain strongholds in Persia, and the Assassin cult later expanded its power to mountain strongholds in the areas of present-day Syria and Lebanon. It was from the Assassin strongholds in the area of Syria and Lebanon, that the "Old Man of the Mountain" (Shaykh al Jabal) collaborated with the crusader orders, especially the Templars. It was through the crusader orders, the Templars and Hospitallers, and through Sufi influences radiating into and through the chivalric cults of Spain, that Sufi-Gnostic religious cults such as the Cathars became a power inside Western Europe itself.

As we have noted, the roots of Sufism are pre-Islamic, and include such models of terrorist drug-cults as the Phrygian cult of Cybele-Dionysos and continuations of the pre-Aryan Shakti-Shiva cults in the area of modern India and Pakistan. The chief means by which a revival of such cults was introduced to Islamic populations from Byzantium, was through the same network of merchant-usurers who brought the Seljuk mercenaries into Baghdad. The name, "Sufi," is derived from the fact that these merchant-usurers operated chiefly through a kind of freemasonic guild of weavers and cloth-traders (Suf = "wool"). This guild's widespread operations equipped it as an able intelligence organization, op-

erating and recruiting under the cover of the wool-trade. This afforded the cult a growing mass-base among rural weavers and wool-growers, as well as a hard core of operatives within the urban centers.

Hassan e' Sabbah added "brainwashing" by aid of hashish, and military strongholds of brainwashed terrorist assassins, to the preexisting capabilities of this Sufi freemasonic cult.

The cult's special capabilities for intelligence work included its command of numerous European and other languages, and a familiarity with the customs of most parts of Eurasia and northern Africa which enabled Assassin spies to operate effectively in adopted disguises in many parts of the world. The cult effectively ran the Middle East from the inside, from the establishment of the network of mountain strongholds, until the aftermath of the Mongol invasion, when the last of the strongholds was conquered by the Mamelukes. Assassin intelligence capabilities were taken over by the Mamelukes.

Sufism continued to spread after the dissolution of the autonomous power of the Shaykh al Jabal, including such notorious varieties under the Ottoman dynasty as the various cults of dervishes. Syria and Alexandria continued as centers of Sufi intelligence operations modeled on the tradition of the Assassins down to the present day. Sufi organizations extend into India, Pakistan, and so forth today, in the networks of the Ismaili cult, and among non-Islamic as well as quasi-Islamic cults, such as the Ahmaddiyya cult of the Abu Salam of Trieste. Every school-child preparing for a career in statecraft or intelligence services in Syria or Iran, is well-schooled

To take Syria off the list of nations linked to international terrorism, would be an act of disarming U.S. intelligence and law-enforcement agencies against the present, Soviet-directed terrorist assault within Western Europe, and the Americas.

in the history of the Sufis and Assassins.

The methods employed by international terrorism today, are identical with those of the Assassins, and Syria has been the training-ground on which the core of all international terrorist organizations mastered the art of such terrorism.

Sufism and European intelligence

It is most significant that Houston, Texas's Madame Monique (Schlumberger) de Menil, wife of Jean de Menil, is both a professed Sufi mystic and one of the most influential political friends of international terrorism inside the United States. The principal connection arose from the fact that the imperialist party in France was always the set of Franco-Swiss financial families, including Mallet, de Neufville, and Schlumberger, which formerly backed Jean-Jacques Rousseau, Voltaire, Robespierre's Jacobins, and the spread of the nineteenth-century Romantic movement into Germany. The key to France's deep links to Sufism and the Corsican role in the international drug-trade, is Syria.

The British and German intelligence services' connections to Sufism are more interesting.

The 1878 Treaty of Berlin established the terms of a three-way "great game" in Asia, among Russian, British, and German intelligence services. Prior to World War I, German naval and diplomatic intelligence cooperated with and against the Ottoman empire, in operations ranging from Rajasthan in British-occupied India and throughout the Middle East. This pre-World War I German-intelligence matrix was maintained by the German foreign-office and military-intelligence organizations through World War II, and provided the basis for the operations of Admiral Canaris's Abwehr (Second Division) in India and the Islamic world during the Nazi period.

For example, today's Ayatollah Khomeini and the Tabatabai active in both Bonn, West Germany, and as Khomeini's ambassador to Moscow, are descendants of families which were traditionally assets of German intelligence since the period of World War I. Many remnants of the old German intelligence connections into the Middle East and the Asia subcontinent, continue to the present day, divided between Bonn and Leipzig.

However, as both Canaris and the heads of the permanent civil-service of German foreign-office intelligence were fully aware, before and during World War II, the Middle East and India families listed as German-intelligence assets were also at the same time assets of the British intelligence services, and to some degree both lists of assets overlapped French, Swiss, and Soviet intelligence rosters. The situation is more complicated, by the fact that indigenous interests of these regions also maintained networks among the ranks of families listed on the rosters of assets of variously German, British, French, Swiss, and Soviet services.

Through these connections, Sufism's potential geopolitical significance strongly impressed the Nazi intelligence apparatus, the more so because the Thule Society's irrationalistic Nazi cult-ideology itself, based on Gnostic Catharism and the Wagnerian Parsifal, mological affinities to Sufism. Already, in the late 1930s and during the war, the idea of a blending of Sufism, Nazism, and Synarchism, to become the ideological basis for a global variety of "universal fascism," was developing among high-level Nazi circles, especially among circles of the internationalized Waffen-SS.

After the war, a large part of the Nazi apparatus was kept intact, by understandings reached among British, U.S., and Soviet agencies. This element of the Nazi apparatus was permitted to operate as a Nazi International out of Swiss bases, and to operate widely in the Middle East as well as Ibero-America. The Dulles brothers' use of the husband of Hjalmar Schacht's niece, Col. Otto Skorzeny, in Ibero-America, the Middle East, and Indonesia, illustrates the point. By agreement with Syria, Nazi experts advising the Syrian intelligence services became integrated in the leadership of Syrian intelligence, and long-range Nazi colonization operations, under the cover of a Sufi variety of "Islamic Nazi" network, spread from Nazi International headquarters in Lausanne, Switzerland, as far east as Indonesia and the Philippines.

Today, that Nazi International is operating in cooperation with the Soviet and East German intelligence services, partially through Bulgarian connections, and in cooperation with the Syrian intelligence service.

The case of 'Pablo'

Currently, there is a spy-trial in progress in Norway, the trial of Soviet KGB recruit Arne Treholt. Although much of the interrogation of Treholt, and much of the trial itself, are conducted in secret, the government of Norway has released some of the evidence to the European press. Among the most important of the revelations so far, is Treholt's reported revelation, that the networks of present Greek Prime Minister Andreas Papandreu had been the channel through which Treholt was recruited to the service of the Soviet KGB. The specific fact reported, is that this recruiting was done, prior to the colonels' coup in Greece, through a New York City-based branch of Papandreu's organization.

EIR's files are rich in detail on the subject of Papan-dreou's 1967-75 network in New York City, a nominally Trotskyist KGB cell operating out of the back room of a bakery in Manhattan. The bakery was the Manhattan headquarters for an international network operated by one Michel ("Pablo") Raptis, the present-day sub-controller (under Soviet Ambassador Igor Andropov) of Prime Minister Papan-dreou, and director of Papan-dreou's reorganization of the Greek military and intelligence services, a network linked to the attorney-general of Cyprus, a network controlling a group of Greek military officers, the KGB assets recently appointed to key positions in the Greek military. Putative Trotskyist Michel Raptis ("Pablo") has a deep connection to both the Nazi International and Lausanne's François Genoud, as well as to Syrian intelligence, and to the Soviet KGB's Henri Curiel network in France. Pablo's known connections to Syrian intelligence are centered on Pablo's role in recruiting European terrorists for training in Syrian camps.

Like both Rudolf Hess and Curiel, Pablo is a product of Alexandria, Egypt. Pablo turns up in Greece in 1930, as part of a delegation meeting L. D. Trotsky, and was together with Andreas Papan-dreou as part of a Greek Trotskyist cell during the mid-1930s. At the close of World War II, Pablo was appointed head of the Trotskyist "Fourth International," together with Pierre Frank and the present leader of the "Fourth International," Ernest Mandel, aka Ernest Germain, aka Ernst Mandelbaum. The latter was, until the late 1960s, a key figure of a semi-secret Korschite network in West Germany, the network key to the creation of the "New Left" organizations in that country. During the postwar period, Pablo emerged as an asset of both the Nazi International and Soviet interests, closely associated with international terrorism and with Nazi International asset Ben Bella. Beginning no later than approximately 1967, Pablo was the controller of Andreas Papan-dreou. Pablo provided Papan-dreou his personal security, with aid of KGB personnel assigned to Pablo's operation by a Greek KGB official also a member of the Politburo of the Communist Party of Greece. This overlapped operations run through Tony Cliff's London-based international organization, the Foot-family-linked International Socialists.

The back room in the Manhattan bakery was the New York City headquarters of this KGB-steered operation. This was the New York City element of Papan-dreou's Pablo-run network to which Treholt's reported admissions correspond. This is the same network running guns into Greece through Cyprus, under the auspices of the then, and present, attorney-general of Cyprus.

The key Greek KGB operatives known to us as part of this operation include a woman formerly married to a leading member of the Politburo of the Communist Party of Greece (KKE), and her two brothers. One of the brothers is presently a KGB *resident* in Greece, and a member of the KKE Politburo. The other brother, also a KGB operative, is assigned to East German intelligence, and operates through Greek seamen-networks in the Western Hemisphere, from a base in

Montreal, Canada. It is *EIR*'s familiarity with this cell and some of its activities, which helped greatly to unravel the dossiers of the amazing Pablo and Andreas Papan-dreou.

Today, Soviet strategy is aimed principally at bringing West Germany into the Soviet sphere of strategic influence, a persisting, 68-year-long central feature of Soviet strategy. Then and now, Moscow believes, quite rightly, that bringing Brandt's Social Democrats to power in West Germany, will bring West Germany out of NATO and into the Soviet sphere of influence. Under that circumstance, all of Western Europe's productive capacity, greater than that of the United States, becomes available to the Soviet economy.

To bring about this shift in Germany, Moscow is proceeding to tear NATO apart, partly by accelerated deployment of international terrorism and the international drug traffic, and also by tearing out both the northern (Scandinavian) and southern (Greek-Israeli) flanks of NATO. Papan-dreou is key to the destruction of NATO's southern flank. The combination of Greece and Syria, is key to shifting Israel into the role of a nominally independent "New Venice," of casinos, off-shore banking, and regional military power, operating within Soviet-dictated guidelines within the Eastern Mediterranean. Guidelines for "limited conflict" between Israel and Syria, and U.S. downgrading of economic and strategic assistance to President Mubarak's Egypt, ensure Moscow a Soviet-dominated sphere of influence throughout the Eastern Mediterranean. Once Numayri's Sudan falls into the sphere of influence of Soviet agent of influence Qaddafi, the arc of Libya, Chad, Sudan, and Ethiopia, ensures the easy destruction of Egypt, Saudi Arabia, Jordan, and the destruction of Iraq by an Israeli-Soviet-controlled Iran.

Syria in Moscow's imperial scheme

The importance of Syria's intelligence service to Moscow, is better appreciated within the context of a general outline of the geographic and demographic features of the new Soviet world-empire which the present Andropov dynasty is working to establish during the 5 to 10 years ahead. What is projected is not a world ruled by occupying Soviet legions, but a more complicated array, of an inner Soviet empire, surrounded by semi-autonomous satrapies, and, beyond the borders of these satrapies, nominally independent Soviet client-states.

In Europe itself, the boundaries between the Soviet empire proper and semi-independent client-states of Central and Western Europe are dictated by the cultural divide between Catholic and Byzantine spheres of influence, established by Charlemagne and his Frankish successors. In the north, the Germans and Poles lie to the west of this divide; in the south, it is the division between Croatia and Serbia. The principal European satrapies of the Soviet empire are indicated to become Romania, Serbia, Bulgaria, and Albania, with Bulgaria probably assimilating the old Bulgarian empire's provinces of Macedonia and Thrace from parts of Greece and a dismembered Yugoslavia.

Central Europe's Germans, Czechs, Hungarians, and Croats, are to become part of a Venice-managed Hapsburg paradise, more or less on the model of the fragmented, petty semi-autonomous states of a Pan-European Union, supplemented by some degree of "separatist" dismemberment of France, Italy, and Spain, perhaps with some enlargement of Switzerland into former Burgundian regions of France.



PIB Photo

In Moscow's plan, the Mideast is to be controlled through a state of managed hostilities between a Greater Syria and a Greater Isreal. Shown is Syrian President Hafez al Assad.

East and south of the East-West cultural divide in Europe, the Soviet empire proper will be composed predominantly of Slavs and Turanians of Islamic cultural matrix, plus the Caucasus stocks. From what remains of partially-dismembered Greece, south, Moscow will follow the model of the Byzantine and Ottoman empires, using Syrian intelligence and a cultivated special relationship with a nominally independent state of Greater Israel. To the east, the states of the Asian subcontinent will persist somewhat dismembered, as nominally independent and incessantly quarrelling Soviet client-states. Further to the east, a Japan virtually abandoned by the weakened United States will be left independent, so that it might be directed into a de facto military alliance with Vietnam as a check against China.

A ruined Africa will be under Soviet hegemony. In the Americas, an increasingly weakened United States will be

bogged down and bled in incessant wars and bloody insurgencies below its borders.

That is the most probable general scheme of things, if Moscow succeeds without resort to Ogarkov's preparations for a *Blitzkrieg* military assault against the United States itself. This picture depends not upon filching secret plans from Kremlin safes; the dynamics, capabilities, and operational commitments of Soviet policy-making show that Moscow's imperial expansion will tend to follow more or less exactly the outline we have supplied.

Although Moscow is preparing for general war against the United States by 1988-89, Moscow would prefer to secure its goals through collapse of NATO and of the U.S. economy (and military budget). In the case that the Soviets win without resorting to Marshal Ogarkov's plan for intercontinental *Blitzkrieg*, as we have outlined the case above, Western Europe would not be occupied by Soviet forces. Instead, Western Europe would be reorganized as a group of nominally independent Soviet satrapies, ruled by governments established with Soviet approval, governments supervising delivery to Moscow of what Moscow demands, on Moscow's terms.

In this case, the capital of nominally non-Soviet Europe would become Venice-Trieste, with Switzerland functioning as Venice's piggy-bank. A major portion of the European financial interests is prepared to accept this revision of the world's map, on condition that these interests become the ruling power in Moscow's Central and Western European client-states. Politically, the Nazi International and the Synarchist international networks, offering a form of "universal fascism," are the mass-based arms through which the traitorous financier interests operate. It is these Western European financier "families," rather than Soviet influence directly, which causes much of the Anglo-American Liberal Establishment to work on Soviet behalf in disarming the United States, and in opposing the President's Strategic Defense Initiative.

It is that same trans-Atlantic complex of treasonous, "liberal" influences, which pushes to have Syria taken off the list of nations behind international terrorism, the same-liberals who benefit from laundering the hundreds of billions of the international drug-traffic, and who oppose President Reagan's implementation of a War on Drugs.

Syrian intelligence's special capabilities represent a more or less indispensable talent to be employed adjunct to the KGB itself. A perpetual state of managed hostilities between the ruling circles of a Greater Syria and a Greater Israel, would tend to keep the entire Arab region under finger-tip control, and Soviet bolstering of Syria while playing Israel, would keep both Syria and Israel under effectively Soviet finger-tip control. Part of the deal with Israel would be delivery of some hundreds of thousands of Soviet Jewish emigrants to occupy the enlarged, occupied territory of Greater Israel.